

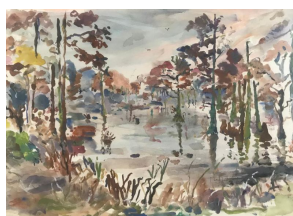
IMPORTANT ON SITE AUCTION!

ON SITE/RAIN OR SHINE on the Oceanfront
#1 HAZLETT AVE., "INDIAN BEACH"
DEWEY BEACH, DELAWARE

SAT., SEPT. 7th 9:30 AM



IN PREPARATION FOR DEMOLITION, EVERYTHING AND ANYTHING
WILL SELL FOR THE HIGH DOLLAR BY THE PIECE AND IN SMALL LOTS!!
All designer contents, furniture, smallwares, rugs, bedroom sets, living room
& dining room pieces, patio furniture, appliances, kitchen cabinets, stairway
parts, windows, doors, siding, garage pieces, gym equipment, fireplace
surrounds, beams, trim, orig. artwork by Lewis, Evans, Bounds and more!!!
PHOTOS REPRESENT A SMALL PORTION OF CONTENTS TO BE SOLD!!



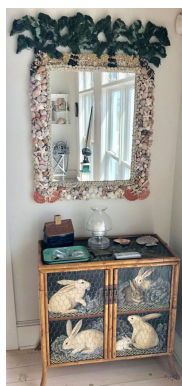
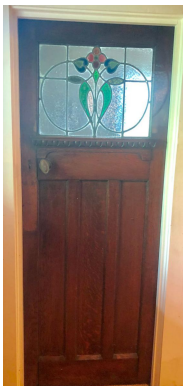
1990 Jack Lewis "Trussum's Pond"



Orig. w/c by Anabel Evans



Orig. Pam Bounds



Many custom signs



1 of many
schooners & pond
sailors

Very high end wall heat pumps, fixtures, appliances, staircases, hot tub w/brand new heater, pool table, doors, window treatments, built-ins, flooring, light fixtures, cabinets, and much more!!! Including; cook top by Thermador, Kitchen Aid wall oven, countertop appliances, knotty pine flooring, 100's of feet of deck railings., 2 metal exterior spiral staircases, Dyna Glo gas grill, built-in cabinets, vanities & sinks, central vacuum system, GE stack washer and dryer, A/C window unit, several modern Mitsubishi in-wall ductless electric heat pumps lightly used, storm doors, ceiling fans, several sliding glass doors, Kenmore refrigerator, garage shelving, large natural finish post & beam structural pcs., handrails, etc., fireplace surround, bars, sinks, tongue and groove paneling, apartment size appliances, ceiling timber, electrical fixtures, built-in lights, natural stone pieces, outdoor lattice, Andersen windows and doors, pickled exposed beams, lg. custom pine and tile kitchen cabinets, built-ins and islands, surround sound system, 2 sets 14ft. custom sliding glass doors, double etched Victorian glass doors, natural pine heavy duty hand rails, white washed pine floors, natural finish bull pine floors, overhead lighting, custom made cushions, thousands of dollars of custom window treatments, fabric and shutters, showers, vanities, mirrors, bar lights, 3 levels of open pine and oak stair cases approx. \$100,000 worth of custom work!, ceiling beams, Trex decking.



**If we don't offer it
ASK for it!!!**

2003 Mercedes-Benz SL500
Hardtop Convertible, 38,589±
miles, black w/tan leather int.

TERMS: Cash, personal check or credit card with 2 ID.'s on day of sale. A 13% Buyer's Premium will be added to all purchases, w/a 3% discount for payment by cash or check. All items sold "as is" with removal day of sale.

CALL FOR MORE INFO

EMMERT AUCTION ASSOCIATES

"We Bring Buyer & Seller Together"

(302) 227-1433 Day • (302) 227-3946 Fax • (302) 542-5026
emmertauction.com • like us on Facebook!!

AUCTIONEER'S NOTE: This landmark designer furnished home, 7,500±sq. ft. is being demolished in preparation for new ultra modern construction. A huge lot of high dollar beach oriented furnishings & smalls, plus architectural pieces, built-ins, hot tub, wooden & spiral staircases, custom doors, trim, and any and all house parts!!

OPEN HOUSE
★ Fri., ★
★ Sept. 6th ★
★ 4 - 6 pm ★

★ If you are building, remodeling or furnishing a fine home, DON'T miss this SALE!! ★