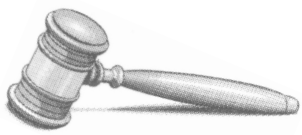


# IMPORTANT ON SITE AUCTION!



**On Site Rain or Shine**

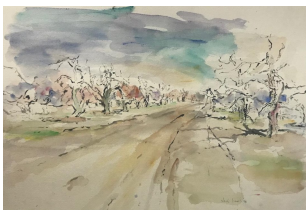


**22507 Bridgeville Hwy, Seaford, DE**

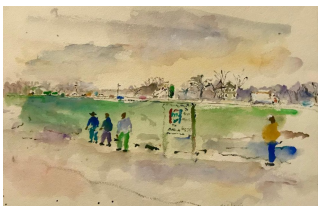
**SAT., APR. 24<sup>th</sup> 9:30 A.M.**



Sev. blanket chests & early stoneware



1994 Jack Lewis "Smith Orchard III"



1987 Jack Lewis "Bridgeville"



Many quilts, coverlets & textiles



4 bedrooms sets



Sev. Gone with the Wind Lamps



Emmert Auction is pleased to represent the Estate of the late Sally Irene King of Seaford, DE. She was a dealer and collector for approx. 60 years and accumulated a super selection of pine & hardwood furniture, china, country & primitive pieces, as well as a Ralph Bros. corner cupboard, 3 other corner cupboards, thousands of smalls and much more!!



Sev. exc. side by sides



1 of many rare lamps



Ant. bureau w/huge lot converted oil lamps



Mint cond. & working



Sev. stepback cupboards



Ralph Bros. corner cupboard



1 of many clocks



Coll. Victorian ladies shoes



Pine corner cabinet



1940's refrigerators by GE, Norge, etc.



2010 Cub Cadet GT 3100 Barely used in exc. cond.

**ART, CHINA, COLLECTIBLES, GLASSWARE, JEWELRY, RUGS, TOYS & MORE:** Advertising clocks, ant. Spartan radio advertising, ant. flour & grain sacks, ant. cast iron scalding pots, Spongware, Enamelware, 1940's kitchenware, early tinware, early Coca Cola bottles & advertising, early 1 horse sleigh, ant. ag. tools, country store scales, ice tongs, milk cans, hanging sign w/brass star, lg. lot converted lamps, ant. flat irons, octagonal schoolhouse clock, ant. radios, super ant. DE license plate incl.: 1923, 1930 & 1938, Towle trays, lot American Fostoria, ant. butter churns, lot Fiestaware, framed vegetable labels, early coffee tins, clam baskets, Honest Weight scales, rare lg. applewood churn, stave barrel on churn, apple gathering wooden pails, 1920's & 1930's framed advertising, mixing bowls, National Biscuit Co tins, Hershey's tins, ant. lunch boxes, Campbell soup ads, ant. telephones, ads for Red Roster seeds, regulator clocks, ant. throws, coverlets & quilts, barber tools & straps, wall hung medicine cabinets, Campbell soup lunchboxes, lg. lot cut & pattern glass, walnut candlestand, very lg. lot oriental rugs & carpets from 2'x3' to 10'x13', cranberry & clear glass, crystal bowls & center pcs., rare Limoge china, flo blue china, chocolate sets, mission oak clock, 8 pcs. ex. glazed stoneware, carriage & railroad lamps, pine linen press, Gone With the Wind lamps, Vaseline glass, Hobnail, Camphor, ant. ladies shoes, ant. baskets, Rayo lamps, early ant. wagons w/dolls, flax wheel, early to late Christmas decor, brass floor lamps, banjo clock, dough bowls, lots o wrought iron smalls incl.: trivets, shelves, utensil racks, etc., mission clock, ant. power boxes & biscuit jars, lg. lot advertising tins & country collectables, framed early firearm advertising, Early Japanese tin trays, pipes & pipe racks, Victorian era ladies clothing, sewing baskets, early painted boxes, approx. 15 American girl dolls, milk bottles incl.: 3 Lone Elm Dairy, 8 Hollybrook, 2 Wilson, 3 Shadow Brook, 6 Larrimore, 2 Lewes Dairy, 1 Climes and 1 Hi-Grade Dairy and much, much, more!!



**APPLIANCES:** 1940's Quality insulated propane stove in green & white enamel, Norge lift top enamel ant. gas stove & oven, free standing General Electric gas refrigerator, 1950's Hot Point refrigerator, 1940's 2 burner gas stove, Southbend iron & stainless 6 burner woodstove w/oven in like new cond. copper boiler and more!!



1972 Custom deluxe Chevy runs w/new tires



1952 Ford tractor



1984 Ford F350 dump body truck



Exc. Hoosier cabinet w/accessories



1 of sev. 1930's & 40's stoves



Covered cargo trailer



2010 Cub Cadet GT 3100 Barely used in exc. cond.

**TERMS:** Cash, personal check or credit card with 2 I.D.'s on day of sale. A 13% Buyer's Premium will be added to all purchases, w/a 3% discount for payment by cash or check. All items sold "As-Is", "Where-Is" with removal the day of sale.

**CALL BUTCH OR WILL FOR DETAILS**

**EMMERT AUCTION ASSOCIATES**

*"We Bring Buyer & Seller Together"*

(302) 227-1433 Day • (302) 227-3946 Fax • (302) 542-5026  
emmertauction.com • like us on Facebook!!

**AUCTIONEER'S NOTE:** A representative sampling of the thousands of items to be offered. 2 Auctioneers at all times, as this is a very LARGE sale, held outside and under tent. The family has collected, bought and sold for over 60 years. Exquisite furniture, smalls, lamps, clocks, primitive and formal pieces, art, cars, trucks, tractor and much, much, more!!

**Preview Tues., Apr.20th from 3:30 to 5:30**

★ **THIS WILL BE THE BEST ON SITE SALE YOU WILL ATTEND THIS YEAR!!** ★