

AUCTION



Real Estate and Contents

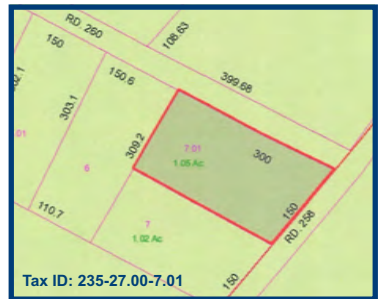


BETWEEN LEWES & MILTON DE

SAT., JUNE 3RD

* 9:30AM - Contents *
* 12 Noon - Real Estate *

16946 Hudson Rd. & Corner of Walker Rd. in Milton, DE

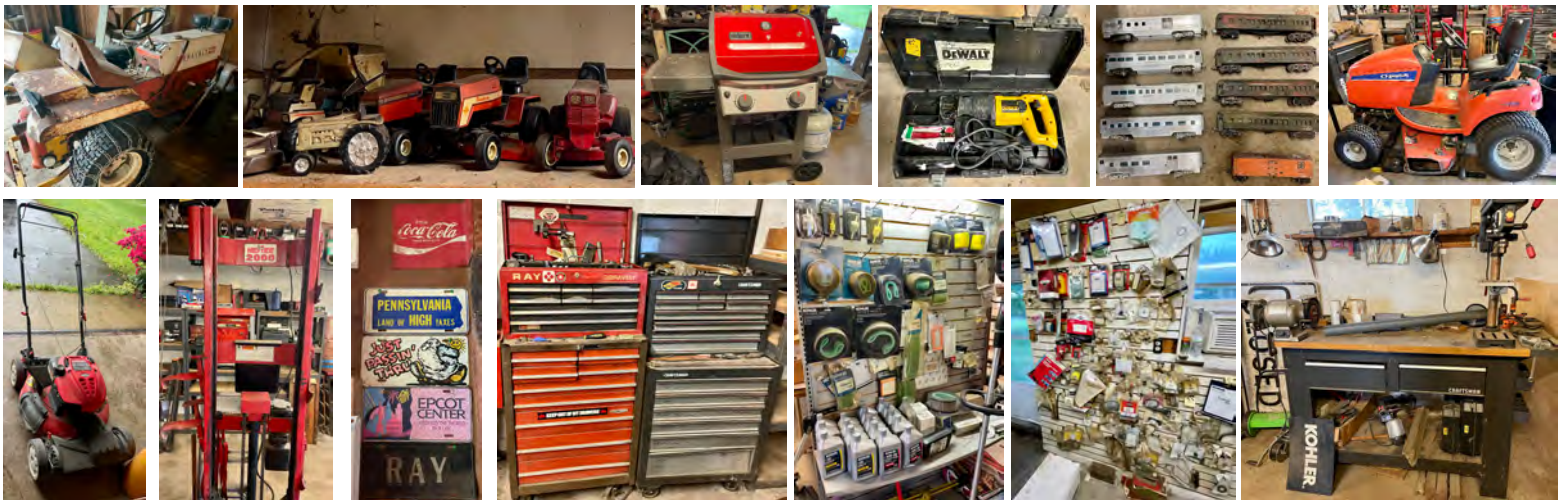


Lg. 1 Acre ± Corner Lot • 3 b/rm Rancher

New Central Heat & Air • Separate Office / Mechanics Shop

Low Sussex Co. Taxes • Cape School District

AMONG THE HUNDREDS OF ITEMS TO BE SOLD



OPEN HOUSE

SAT. MAY 27th 1-3 & TUES. MAY 30th 3-5

CALL BUTCH OR WILL FOR MORE INFO



"We Bring Buyer & Seller Together"

(302) 227-1433 Day • (302) 227-3946 Fax • (302) 542-5026
emmertauction.com • like us on Facebook!

TERMS REAL ESTATE: A 10% deposit to be required on sale day with the balance in cash or certified ck at closing in 30 to 40 days when good unencumbered title will be delivered. A 3% Buyer's Premium to be added to the final accepted hammer price and collected at closing. Property sold "As Is, Where Is."

TERMS CONTENTS: Cash, personal check or credit card with 2 I.D.'s on day of sale. A 13% Buyer's Premium will be added to all purchases, w/a 3% discount for payment by cash or check. Everything sold "As Is"! We will tell you what we know about the items.

AUCTIONEER'S NOTE: The Scull Family have owned this home and mechanics shop for many yrs and Mr. Scull was well known in area for small engine repair. A beautiful and well landscaped corner lot close to Lewes & Milton! New septic system in '04, recently pumped and passed inspection. No HOA.